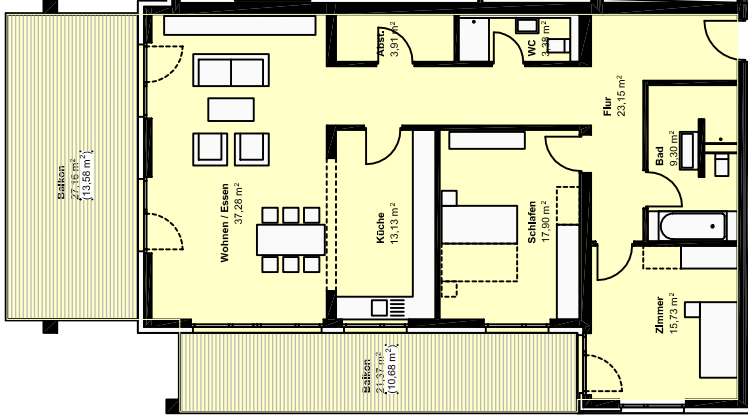
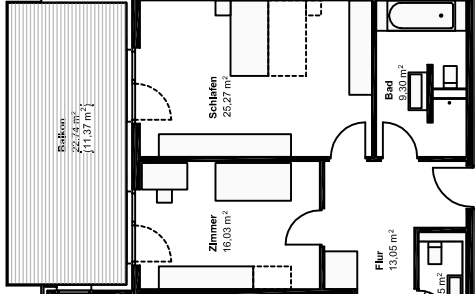


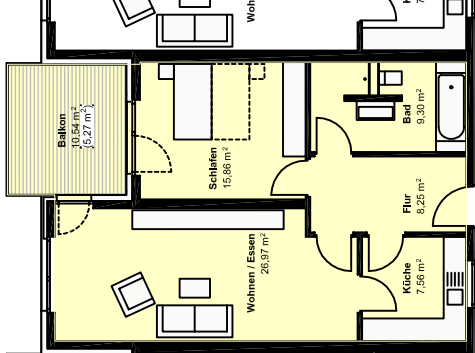
W 2.33
ca. 148,04 m²



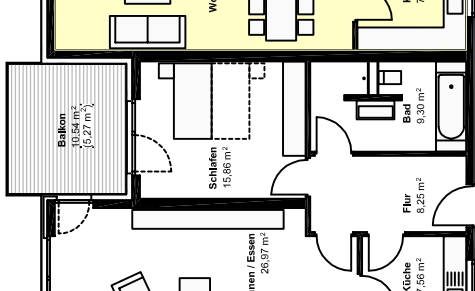
W 2.32
ca. 120,83 m²



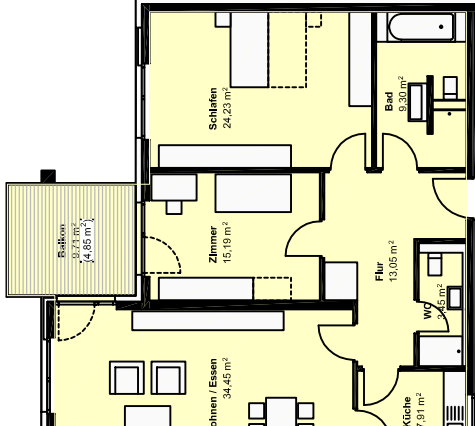
W 2.31
ca. 73,21 m²



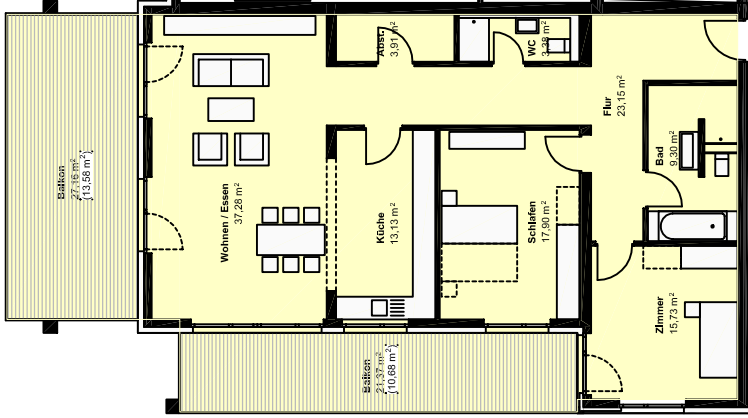
W 2.30
ca. 73,21 m²



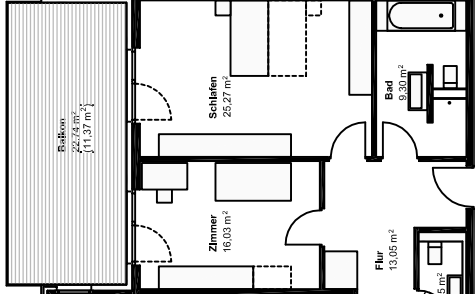
W 2.29
ca. 112,43 m²



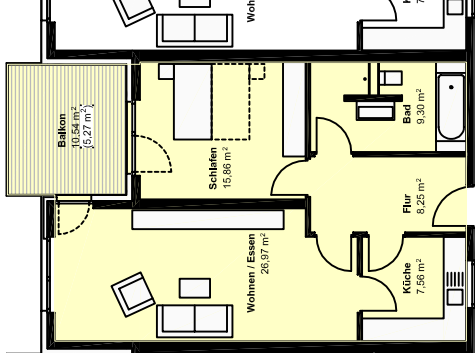
W 2.33
ca. 148,04 m²



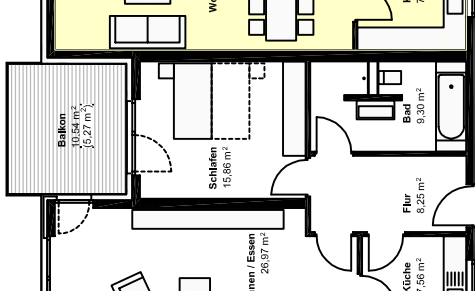
W 2.32
ca. 120,83 m²



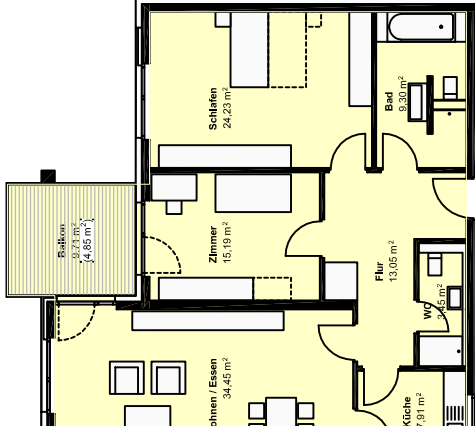
W 2.31
ca. 73,21 m²



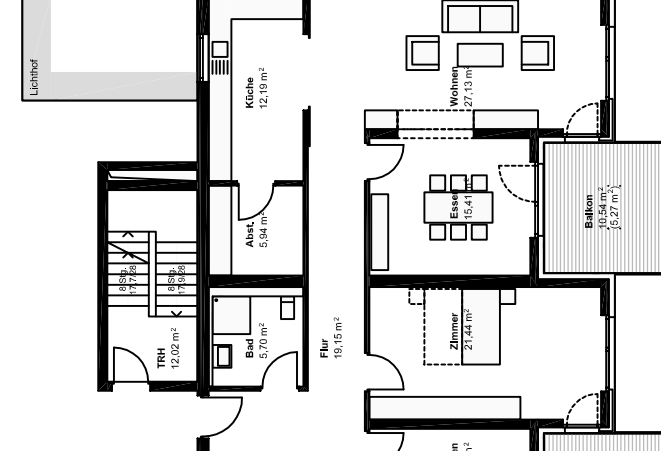
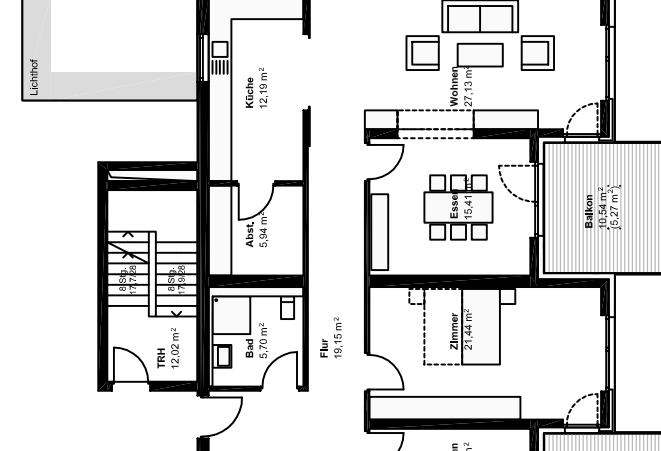
W 2.30
ca. 73,21 m²



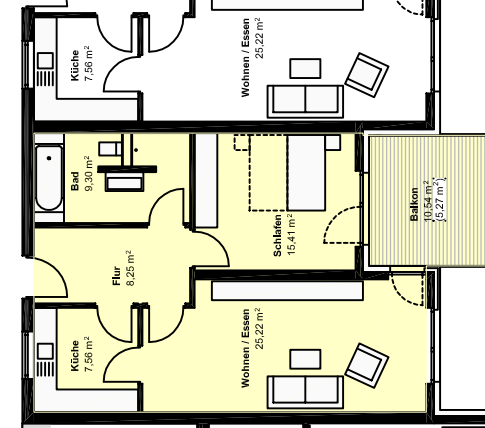
W 2.29
ca. 112,43 m²



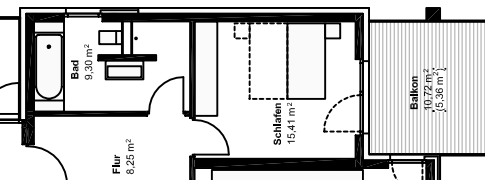
Erreichung
136,10 m²



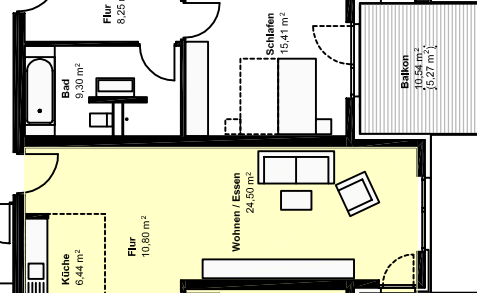
W 2.27
ca. 71,01 m²



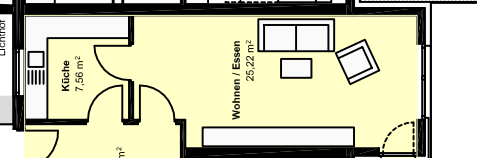
W 2.28
ca. 71,10 m²



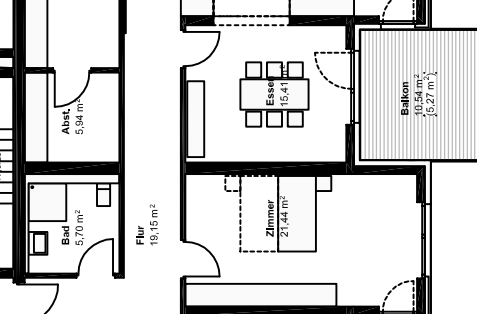
W 2.24
ca. 71,01 m²



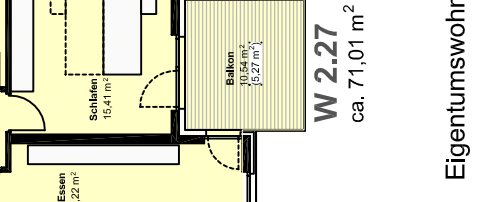
W 2.25
ca. 71,01 m²



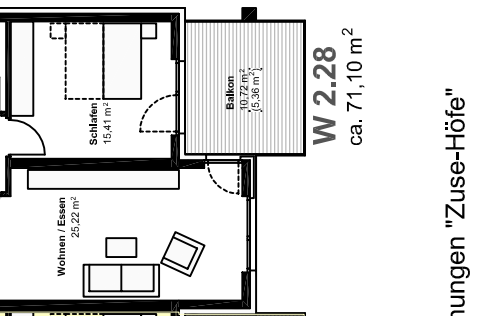
W 2.26
ca. 142,21 m²



W 2.27
ca. 71,01 m²



W 2.28
ca. 71,10 m²



Eigentumswohnungen "Zuse-Höfe"
Knottengasse, Bad Hersfeld



HAUS 2 - 2. Obergeschoss